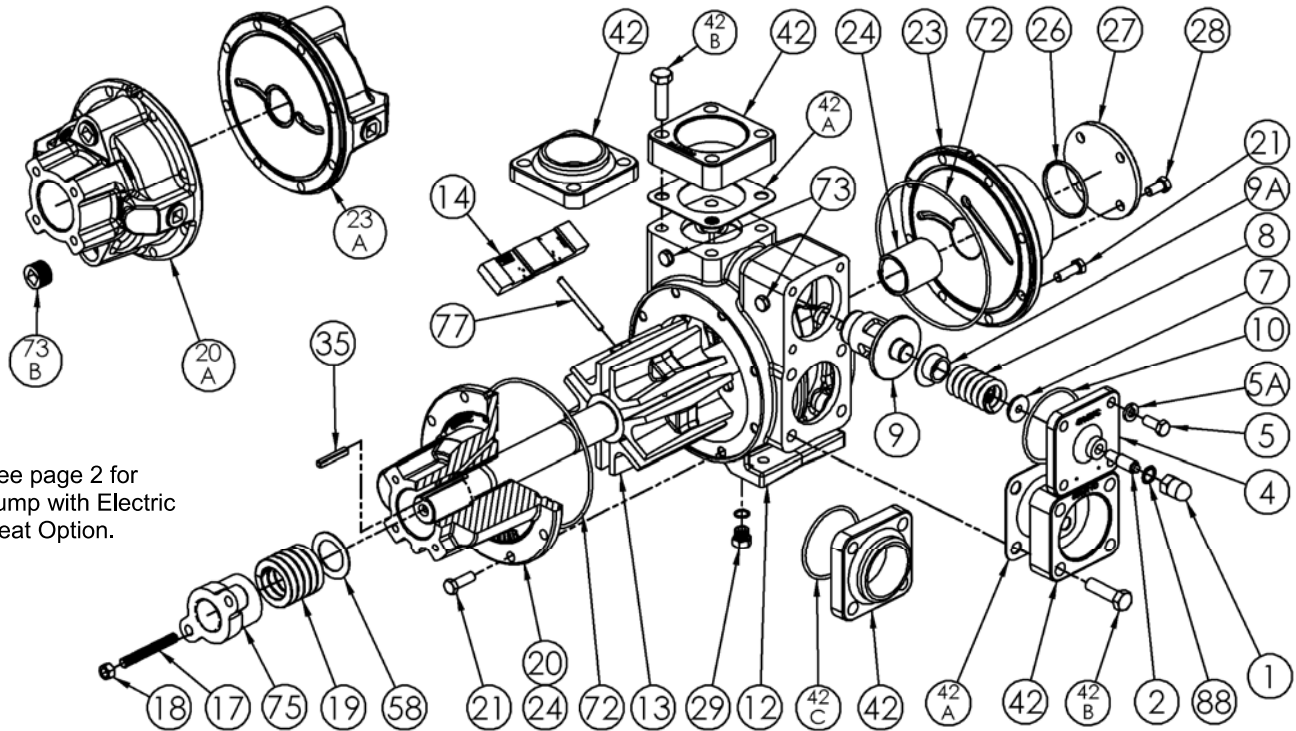


BLACKMER PARTS LIST

PUMP MODEL: NP2.5F

Section 103
Effective Nov 2012
Replaces Sept 2011

Keep with Instructions 103-A00 for Installation, Operation and Maintenance



See page 2 for pump with Electric Heat Option.

| Ref. No. | Description | Qty | Part No. | Ref. No. | Description | Qty | Part No. |
|----------|---|-------|---------------------|------------------|--|-------|---------------------|
| 1 | Cap - Relief Valve (R/V) | 1 | 411453 | 20A | Head & Bushing Asy. - Inboard (Jacket) | 1 | 031672 |
| 2 | Adjusting Screw - R/V | 1 | 431401 | 21 | Capscrews - Head | 16 | 920341 |
| 4 | Cover - R/V (Std.) | 1 | 411600 | 23 | Head & Bushing Asy. - Outboard | 1 | 031677 |
| | Cover - R/V ^{1,4} (high pressure) | | 411608 | 23A | Head & Bushing Asy. - Outboard (Jacket) | 1 | 031673 |
| 5 | Capscrew - R/V Cover (Std.) | 4 | 920316 | 24 | Bushing (Sleeve Bearing) | 2 | ⁵ 161600 |
| | Capscrew - R/V Cover ^{1,4} (high pressure) | | 920421 | 26 | O-Ring - Bearing Cover (FKM) (Std.) | 1 | ⁵ 702038 |
| 5A | Lockwasher - R/V Capscrew ^{1,4} (high press) | 0 - 4 | 909649 | | O-Ring - Bearing Cover (PTFE) | | 702234 |
| 7 | Spring Guide - R/V (Std.) | 1 | 423955 | | O-Ring - Bearing Cover (Buna-N) ⁴ | | 702037 |
| | Spring Guide - R/V ^{1,4} (high pressure) | | 421805 | 27 | Bearing Cover | 1 | 041600 |
| 8 | Spring - R/V (41-50 psi) ² | 1 | 471608 | 28 | Capscrews - Bearing Cover | 4 | 920291 |
| | Spring - R/V (51-110 psi) | | 471631 | 29 | Pipe Plug Asy. (SAE # 6) (FKM) (Std.) | 1 | 908212 |
| | Spring - R/V (111-150 psi) | | 471614 | | Pipe Plug Asy. (SAE # 6) (PTFE) | | 908213 |
| | SS Spring - R/V (51-110 psi) | | 471632 | | Pipe Plug Asy. (SAE #6) (Buna-N) ⁴ | | 908211 |
| | SS Spring - R/V (111-150 psi) | | 471615 | 35 | Key - Shaft | 1 | ⁵ 909177 |
| | SS Spring - R/V (151-200 psi) ¹ (hp) | | 471671 | 42 ³ | Flange - 2½" NPT | 2 | 651611 |
| 9 | Valve - R/V (51-200 psi) (Std.) | 1 | 451623 | | Flange - 2½" Weld | | 651610 |
| | Valve - R/V (51-200 psi) (Nickel Plated) | | 451624 | 42A | Gasket - NPT Flange (Comp.) (Std.) | 2 | ⁵ 381650 |
| | Valve - R/V (41-50 psi) ² | | 451609 | 42B ² | Capscrew - (NPT Flange ONLY) | 8 | 920532 |
| 9A | Collar - Valve ^{1,4} (high pressure) | 0 - 1 | 431606 | | Capscrew - Weld / DIN ⁴ / ANSI Flange | | 920491 |
| 10 | O-Ring - R/V Cover (FKM) (Std.) | 1 | ⁵ 701924 | 42C | O-Ring - Weld Flange (FKM) | 0 - 2 | 701924 |
| | O-Ring - R/V Cover (PTFE) | | 702079 | | O-Ring - Weld Flange (PTFE) | | 702079 |
| | O-Ring - R/V Cover (Buna-N) ⁴ | | 701925 | | O-Ring - Weld Flange (Buna-N) ⁴ | | 701925 |
| 12 | Cylinder (Std.) | 1 | 021605 | 72 | O-Ring - Head (FKM) (Std.) | 2 | ⁵ 702241 |
| | Cylinder w/ SAE Drain (Cast Iron) ⁴ | | 021602 | | O-Ring - Head (PTFE) | | 702242 |
| 13 | Rotor & Shaft, Open Rotor (Shown) | 1 | 261668 | | O-Ring - Head (Buna-N) ⁴ | | 702240 |
| | Rotor & Shaft, Closed Rotor (Opt.) | | 261675 | 73 | Gage Plug | 2 | 908198 |
| 14 | Vane - Duravane (Std.) ⁴ | 6 | ⁵ 091619 | 73B | Jacket Plug | 0 - 4 | 908223 |
| | Vane - EC Laminate | | 091627 | 77 | Push Rods | 3 | ⁵ 121607 |
| | Vane - EC Cast Iron | | 091621 | 88 | Gasket - R/V Cap | 1 | ⁵ 701981 |
| | Vane - EC Bronze | | 091624 | — | Kit - Maintenance | — | 898930 |
| 20 | Head & Bushing Asy. - Inboard | 1 | 031676 | | | | |

¹ Optional High Pressure Relief Valve - parts must be used as a group (includes p/n 411608, 920421, 909649, 421805, 431606 & 471671).

² Low pressure spring must be used with low pressure valve p/n 451609

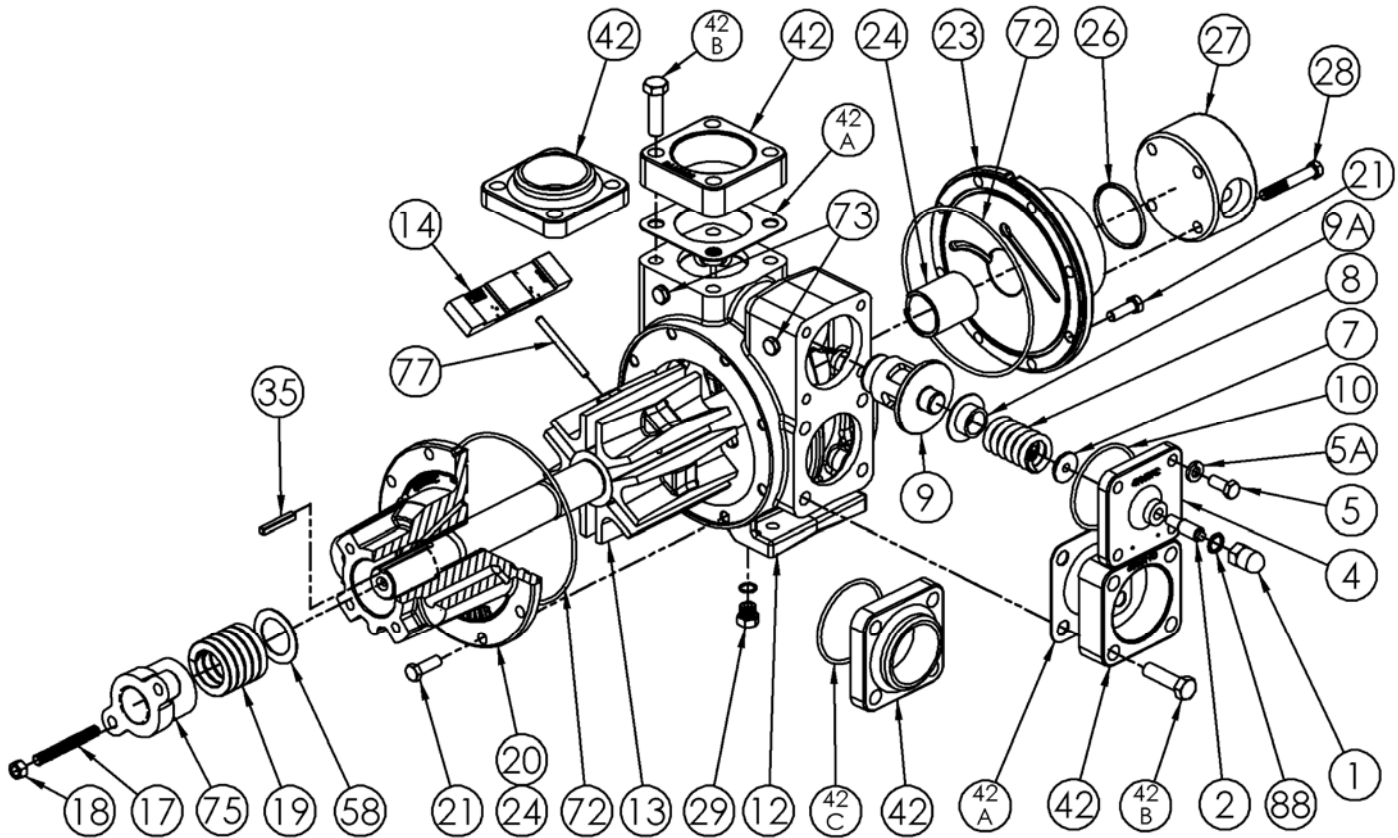
³ See Page 3 for other flanges

⁴ AFFF service pumps include: Nickel Plated, High Press. RV, 200 psi RV spring, Buna O-rings, Cyl. w/ Drain, Lip Seal & Duravanes.

⁵ Included in Maintenance Kit.

EC = Extra-Clearance SS = Stainless Steel

Pumps with Heads for Electric Heating



| Ref. No. | Description | Parts per Pump | Part No. | Ref. No. | Description | Parts per Pump | Part No. |
|----------|--|----------------|----------|------------------|---------------------------------------|----------------|----------|
| 1 | Cap - Relief Valve (R/V) | 1 | 411453 | 24 | Bushing – EH (Sleeve Bearing) | 2 | 161601 |
| 2 | Adjusting Screw - R/V | 1 | 431401 | 26 | O-Ring - Bearing Cover (FKM) (Std.) | 1 | 702038 |
| 4 | Cover - R/V (Std.) | 1 | 411600 | | O-Ring - Bearing Cover (PTFE) | | 702234 |
| 5 | Capscrew - R/V Cover (Std.) | 4 | 920316 | 27 | Bearing Cover EH | 1 | 041880 |
| 7 | Spring Guide - R/V (Std.) | 1 | 423955 | 28 | Capscrews - Bearing Cover EH | 4 | 920444 |
| 8 | SS Spring - R/V (51-110 psi) | 1 | 471632 | 29 | Pipe Plug Assy. (SAE # 6) (FKM) (Std) | 1 | 908212 |
| 9 | Valve - R/V (51-200 psi) (Std.) | 1 | 451623 | | Pipe Plug Assy. (SAE # 6) (PTFE) | | 908213 |
| | Valve - R/V (51-200 psi) (Nickel Plated) | | 451624 | 35 | Key - Shaft | 1 | 909177 |
| 10 | O-Ring - R/V Cover (FKM) (Std.) | 1 | 701924 | 42 ³ | Flange – 2½" NPT (Std.) | 2 | 651611 |
| | O-Ring - R/V Cover (PTFE) | | 702079 | | Flange – 2 ½" Weld | | 651610 |
| 12 | Cylinder (Std.) | 1 | 021605 | 42A | Gasket - NPT Flange (Comp.) (Std.) | 2 | 381650 |
| | Cylinder w/ SAE Drain (Cast Iron) | | 021602 | 42B ² | Capscrew – (NPT Flange ONLY) | 8 | 920532 |
| 13 | Rotor & Shaft, Open Rotor (Shown) | 1 | 261668 | | Capscrew – Weld / ANSI Flange | | 920491 |
| | Rotor & Shaft, Closed Rotor (Opt.) | | 261675 | 42C | O-Ring – Weld Flange (FKM) | 0 - 2 | 701924 |
| 14 | Vane - Duravane (Std.) | 6 | 091619 | | O-Ring – Weld Flange (PTFE) | | 702079 |
| | Vane - EC Laminate | | 091627 | 72 | O-Ring - Head (FKM) (Std.) | 2 | 702241 |
| | Vane - EC Cast Iron | | 091621 | | O-Ring - Head (PTFE) | | 702242 |
| | Vane - EC Bronze | | 091624 | 73 | Gage Plug | 2 | 908198 |
| 20 | Head & Bushing Asy. – Inboard EH | 1 | 031684 | 77 | Push Rods | 3 | 121607 |
| 21 | Capscrews - Head | 16 | 920341 | 88 | Gasket - R/V Cap | 1 | 701981 |
| 23 | Head & Bushing Asy. – Outboard EH | 1 | 031685 | | | | |

³ See Page 3 for other flanges

EH = Electric Heat Option Parts

EC = Extra-Clearance

SS = Stainless Steel



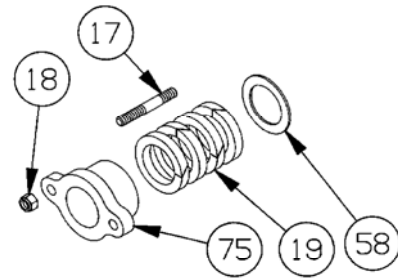
1809 Century Avenue, Grand Rapids, Michigan 49503-1530, U.S.A.
 Telephone: (616) 241-1611 / Fax: (616) 241-3752
 E-Mail: blackmer@blackmer.com / Internet: www.blackmer.com

Parts List 103-A03
 Page 2 of 4

PACKING – STANDARD & ELECTRIC HEAT OPTION

| Ref. No. | Part Name | Parts Per Pump | Part No. |
|----------|---|----------------|-------------------------------|
| 17 | Stud - Packing Follower | 2 | 921868 |
| 18 | Nut - Packing Follower Stud | 2 | 922428 |
| 19 | Packing Set Packing Set – Electric Heat Option | 1 | ⁵ 321868 321880 |
| 58 | Pack Washer | 1 | 355168 |
| 75 | Packing Follower | 1 | 141868 |

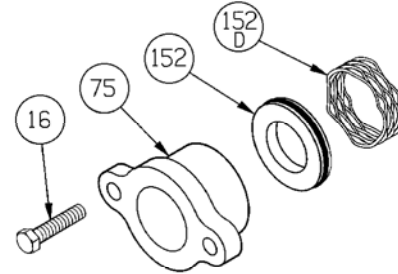
⁵ Included in Maintenance Kit.



LIP SEAL - OPTIONAL ⁴

| Ref. No. | Part Name | Parts Per Pump | Part No. |
|----------|------------------------------|----------------|----------|
| 16 | Capscrew - Follower | 2 | 920359 |
| 75 | Seal Follower | 1 | 141868 |
| 152 | Lip Seal Assembly (To 500°F) | 1 | 702245 |
| 152D | Wave Spring | 1 | 321601 |

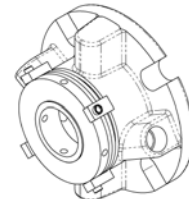
NOTE: A Commercial Mechanical Seal (cartridge type) can be used in place of packing or lip seals. Consult mechanical seal manufacturer for more information.



COMMERCIAL MECHANICAL SEAL (Cartridge Type) - OPTIONAL

| Ref. No. | Part Name | Parts Per Pump | Part No. |
|----------|-----------------|----------------|----------|
| - | John Crane 5610 | 1 | 331639 |

NOTE: Seal Materials (Sil-Car, Carbon, FKM)

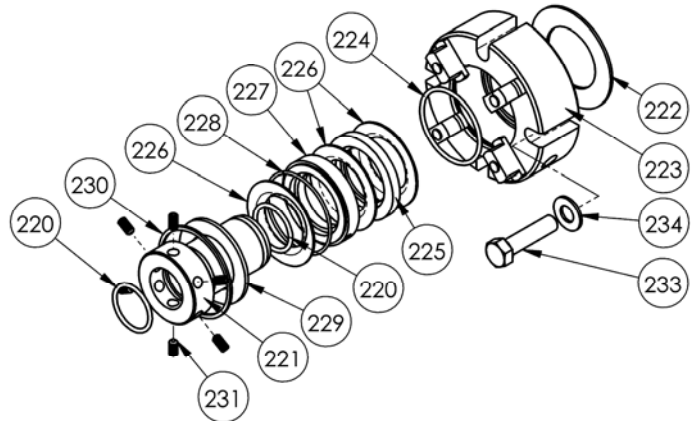


Commercial Mechanical Seal Cartridge Type

TRIPLE-LIP CARTRIDGE SEAL - OPTIONAL

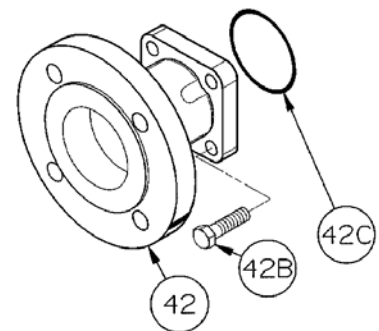
| Ref. No. | Part Name | Seal | Seal Rebuild Kit |
|----------|----------------------------------|---------------|------------------|
| — | TRIPLE-LIP CARTRIDGE SEAL | 331774 | 899105 |
| 220 | Shaft Sleeve O-Ring | 2 | X |
| 221 | Shaft Sleeve | 1 | |
| 222 | Gasket | 1 | X |
| 223 | Gland Plate Assembly | 1 | |
| 224 | Element O-Ring | 1 | X |
| 225 | Seal Spacer | 1 | X |
| 226 | Seal Element | 3 | X |
| 227 | Flushing Spacer | 1 | X |
| 228 | Flushing Spacer O-Ring | 1 | X |
| 229 | Retaining Ring | 1 | |
| 230 | Snap Ring | 1 | X |
| 231 | Shaft Sleeve Setscrews | 6 | X |
| 233 | Gland Capscrew | 4 | |
| 234 | Flat Washer | 4 | |

X = Parts Included in Seal Rebuild Kit



FLANGE OPTIONS

| Ref. No. | Part Name | Parts Per Pump | Part No. |
|----------|-------------------------------|----------------|----------|
| 42 | Flange – ANSI 3" 150 lb. R.F. | 0-2 | 651617 |



ANSI FLANGE



blank



1809 Century Avenue, Grand Rapids, Michigan 49503-1530, U.S.A.
Telephone: (616) 241-1611 / Fax: (616) 241-3752
E-Mail: blackmer@blackmer.com / Internet: www.blackmer.com

Parts List 103-A03
Page 4 of 4