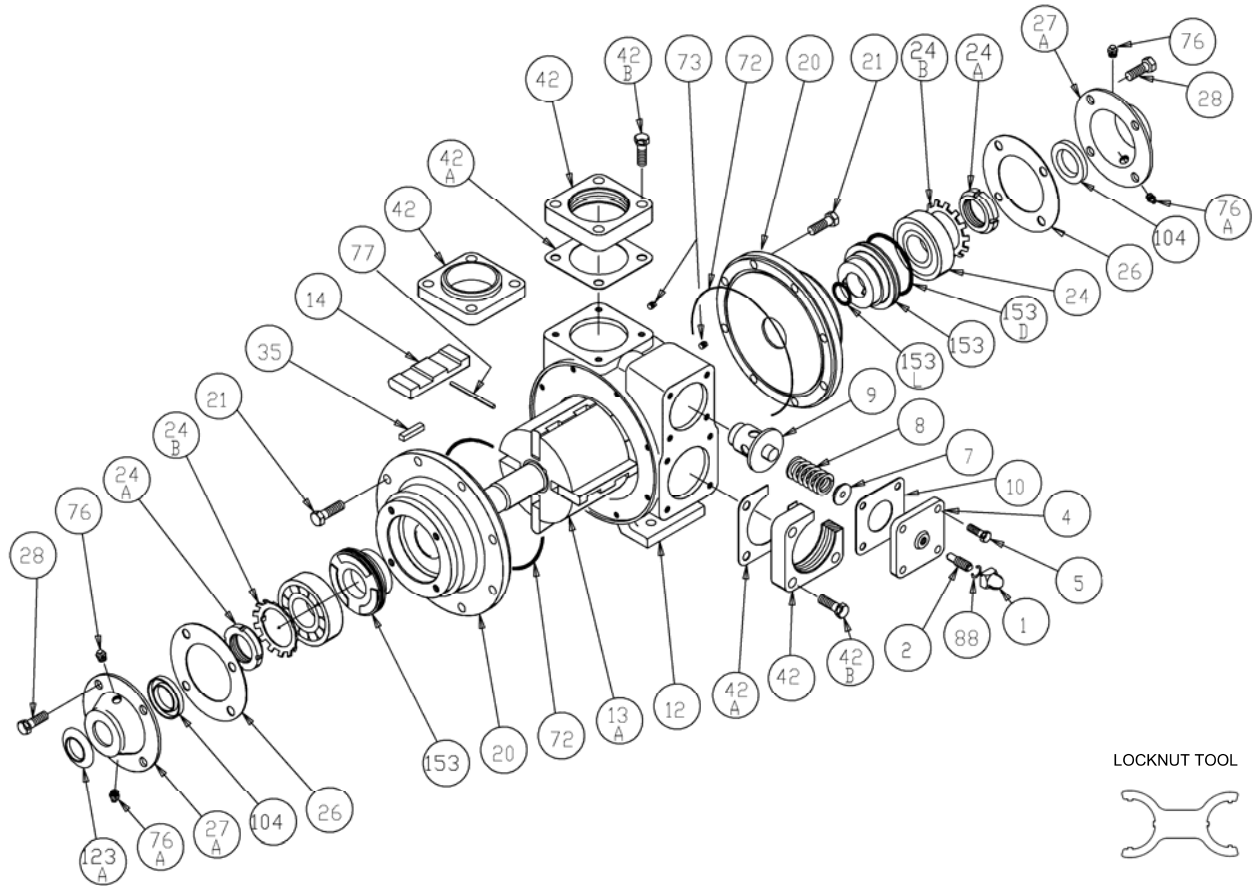


# BLACKMER PARTS LIST

## PUMP MODEL: X2B

Keep with Instructions 101-B00 for Installation, Operation and Maintenance

Section    101  
Effective    Feb 2014  
Replaces    Apr 2012



Ref. No.	Description	Parts per Pump	Part No.	Ref. No.	Description	Parts per Pump	Part No.	
1	Cap - Relief Valve (R/V)	1	411453	24A	Locknut – Bearing	2	<sup>4</sup> 903521	
2	Adjusting Screw - R/V	1	431401	24B	Lock Washer – Bearing	2	<sup>4</sup> 903522	
4	Cover - R/V	1	411401	26	Gasket - Bearing Cover	2	<sup>1</sup> 383940	
5	Capscrew - R/V Cover	4	920316	27	Bearing Cover - Outboard	1	041433	
7	Spring Guide - R/V	1	423955	27A	Bearing Cover - Inboard	1	041431	
8	Spring - R/V (36-50 psi)	1	471415	28	Capscrews - Bearing Cover	8	920285	
	Spring - R/V (51-75 psi)		471420	35	Key – Shaft, Square	1	<sup>1,2</sup> 909209	
	Spring - R/V (76-110 psi)		471425	42	Flange - 2" NPT (Std.)*	2	651411	
	Spring - R/V (111-125 psi)		471428	42A	Gasket - NPT Flange (Std.)	2	<sup>1</sup> 381421	
	SS Spring - R/V (76-110 psi)		471427	42B	Capscrews - NPT Flange (Std.)	8	920351	
9	Valve - R/V (Std.)	1	451417	72	O-Ring - Head (FKM) (Std.)	2	<sup>1</sup> 701914	
	Valve - R/V (Nickel Plated)		451415		O-Ring - Head (PTFE)		702242	
					O-Ring - Head (Buna-N)		701947	
10	Gasket - R/V Cover	1	<sup>1</sup> 531403	73	Gage Plug	2	908198	
12	Cylinder	1	021403	76	Grease Fitting	2	317815	
13	Rotor & Shaft	1	<sup>3</sup> 261426	76A	Grease Relief Fitting	2	701992	
	Vane - Duravane (Std.)		4	<sup>1</sup> 091419	77	Push Rod	2	<sup>1</sup> 123905
	Vane - EC Cast Iron			093923	88	Gasket - R/V Cap	1	<sup>1</sup> 701981
	Vane - EC Laminate		091429	104	Grease Seal	1	<sup>1</sup> 331918	
20	Head	2	031425	123A	Dirt Shield	1	<sup>1</sup> 701480	
21	Capscrews - Head	16	920331		Kit - Maintenance		898956	
24	Ball Bearing	2	<sup>1</sup> 903156		Tool - Locknut		903091	

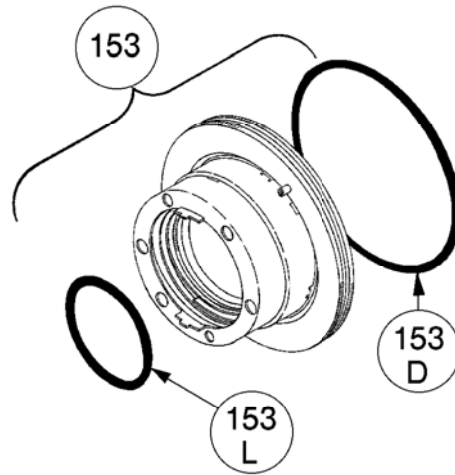
<sup>1</sup> Included in Maintenance Kit      <sup>2</sup> Maintenance Kit also includes Woodruff Key 909130 used previously  
<sup>3</sup> Includes 24A & 24B      \* See Page 2 for Weld & ANSI flange options.      SS = Stainless Steel.      EC = Extra-Clearance.  
<sup>4</sup> Earlier models are not fitted with locknuts and lock washers.  
The current rotor / shaft with locknuts and lock washers may be fitted in place of shafts without locknuts and lock washers.

**MECHANICAL SEALS**

Ref. No.	Part Name	Parts Per Pump	Part No.
153	Mechanical Seal Complete - (Std.) Cast Iron Stationary Seat, Carbon Seal Face, FKM O-Rings. (ICV)	2	<sup>1</sup> 331655
	Mechanical Seal Complete - Cast Iron Stationary Seat, PTFE O-Ring, Carbon Seal Face w/ PTFE Seal Ring. (IACT)		331673
	Mechanical Seal Complete - Stainless Steel Stationary Seat, PTFE O-Ring, Carbon Seal Face w/ PTFE Seal Ring. (WACT)		331648
	Mechanical Seal Complete - Cast Iron Stationary Seat, Carbon Seal Face, Buna-N O-Rings. (INCN)		331601
153D	O-Ring - Stationary (FKM)	2	701921
	O-Ring - Stationary (PTFE)		702056
	O-Ring - Stationary (Buna-N)		701934
153L	O-Ring - Rotating (FKM)	2	701980
	Seal Ring - Rotating (PTFE)		**
	O-Ring - Rotating (Buna-N)		701922

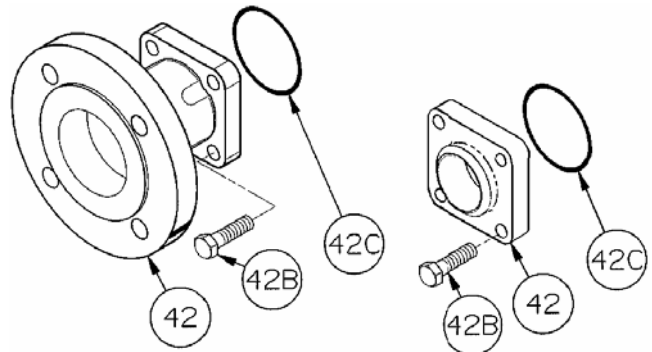
<sup>1</sup> Included in Maintenance Kit

\*\*PTFE Rotating Seal Ring is not available as a separate part.



**FLANGE OPTIONS**

Ref. No.	Part Name	Parts Per Pump	Part No.
42	Flange - 2" Weld	2	654405
	Flange - 2" ANSI		651417
42B	Capscrews - Weld / ANSI Flange	8	920384
42C	O-Ring - Weld/ANSI Flange (FKM)	2	701921
	O-Ring - Weld/ANSI Flange(PTFE)		702056
	O-Ring - Weld/ANSI Flange(Buna-N)		701934



ANSI FLANGE

WELD FLANGE

