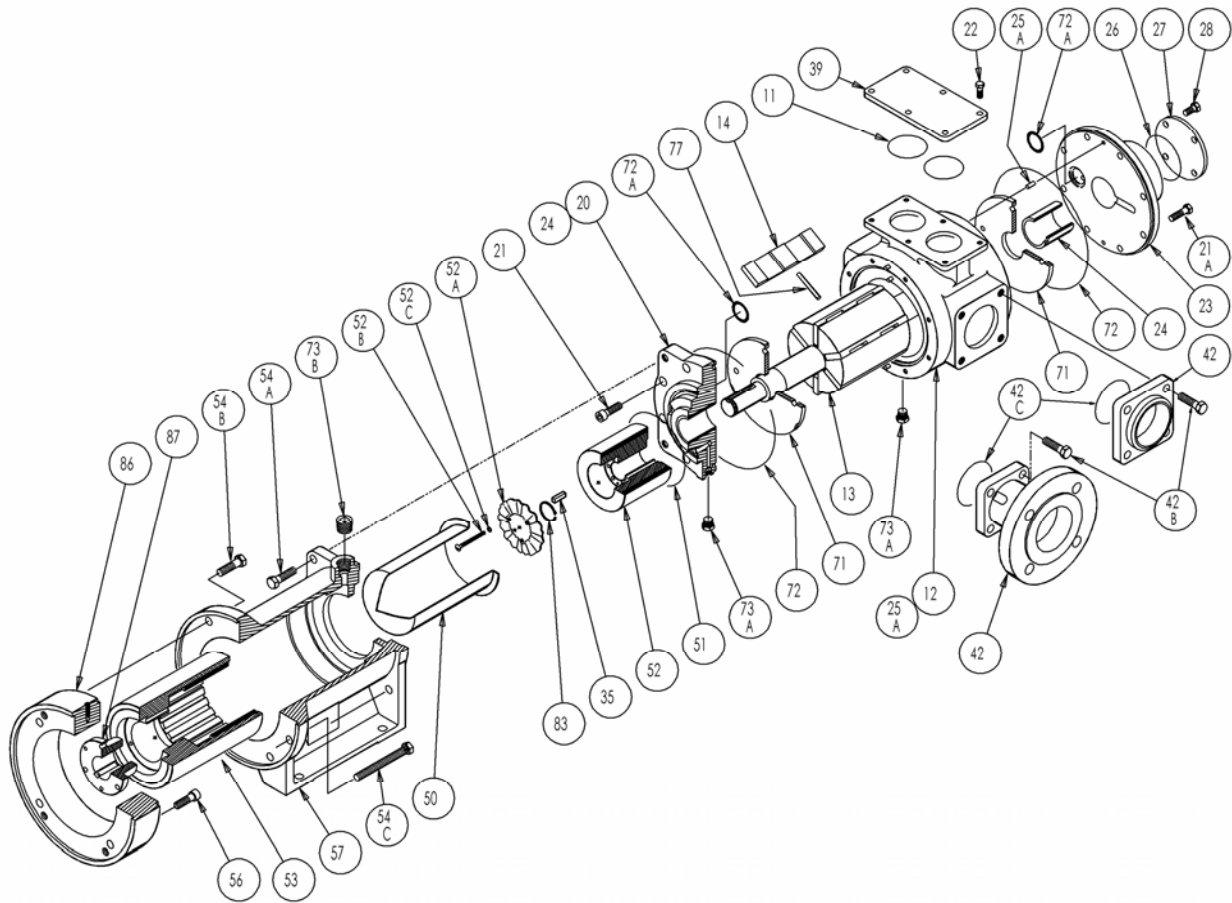


# BLACKMER PARTS LIST

## Discontinued Model: SMVP200C

Keep with Instructions 108-B00 for Installation, Operation and Maintenance

Section 108  
Effective July 2015  
Replaces June 2015



Ref. No.	Description	Parts per Pump	Part No.	Ref. No.	Description	Parts per Pump	Part No.
11	O-Ring - Blanking Plate (PTFE)	2	702078	52A	Impeller	1	684502
12	Cylinder	1	024501	52B	Capscrews - Impeller	3	920021
13	Rotor & Shaft	1	<sup>2</sup> 264500	52C	Lockwashers - Impeller	3	909530
14	Vane - Duravane	6	<sup>1</sup> 094500	53	Outer Magnet	1	See Back
	Vane - EC Laminate		094502	54A	Capscrews - Housing/Head	4	920467
20	Inboard Head & Bearing Asy.	1	034500	54B	Capscrews - Housing/Adapter	4	920535
21	Capscrews - Inboard Head	8	920340	54C	Jackscrews	2	920599
21A	Capscrews - Outboard Head	8	920365	56	Capscrews - Adapter/Motor 254-256TC Frame	4	920510
22	Capscrews - Blanking Plate	6	920335		Capscrews - Adapter/Motor 284-286TC Frame		920553
23	Outboard Head & Bearing Asy.	1	034501	57	Magnet Housing	1	684530
24	Sleeve Bearing	2	<sup>1</sup> 164500	71	Disc - Chem Disc	2	<sup>2</sup> 064500
25A	Dowel Pin	6	930564	72	O-Ring - Head (PTFE)	2	<sup>1</sup> 702202
26	O-Ring - Bearing Cover (PTFE)	1	<sup>1</sup> 702078	72A	Inner O-Ring - Head (PTFE)	2	<sup>1</sup> 702075
27	Bearing Cover	1	044500	73	Gage Plug (1/4" NPT)	2	908193
28	Capscrews - Bearing Cover	4	920335	73A	Drain Plug (SAE #6) w/ PTFE O-Ring	2	908213
35	Key - Shaft	1	<sup>1</sup> 909168	73B	Plug (1/2" NPT)	1	908217
39	Blanking Plate	1	494500	77	Push Rod	3	<sup>1</sup> 124500
42	Flange - Weld	0 - 2	652201	83	Snap Ring	1	<sup>1</sup> 903596
	Flange - ANSI		654500	86	Motor Adapter -254-256TC Frame	1	834501
42B	Capscrew - Flange	0-8	920516	Motor Adapter - 284-286TC Frame	834502		
42C	O-Ring - Flange (PTFE)	0-2	702101	87	Bushing - Outer Magnet	1	See Back
50	Containment Can	1	684501	—	Warning Label - Magnet Housing	1	909504
51	O-Ring - Containment Can	1	<sup>1</sup> 702239	—	Kit - Maintenance	—	898942
52	Inner Magnet	1	See Back	—	Kit - Rebuild	—	899042

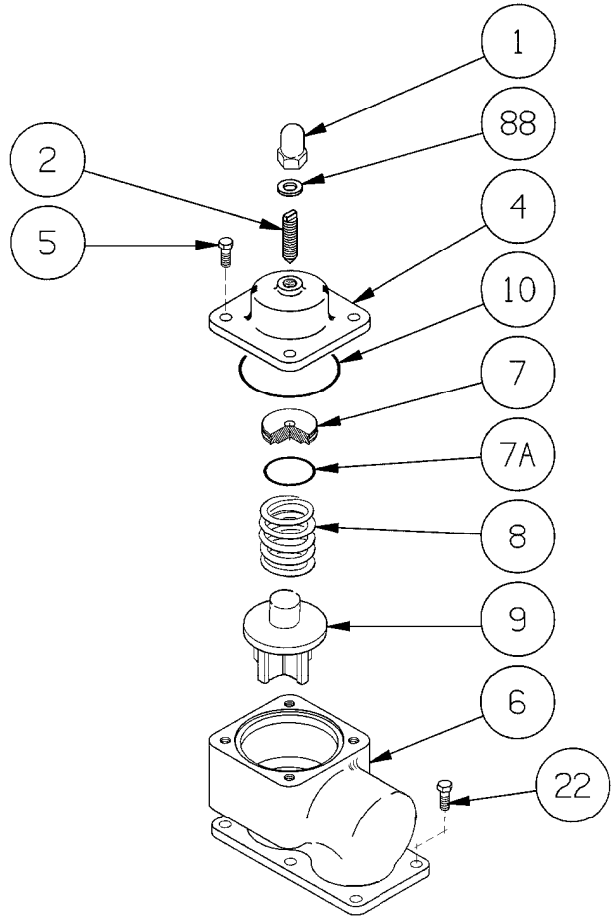
<sup>1</sup> Included in Maintenance Kit and Rebuild Kit

<sup>2</sup> Included in Rebuild Kit

EC = Extra Clearance

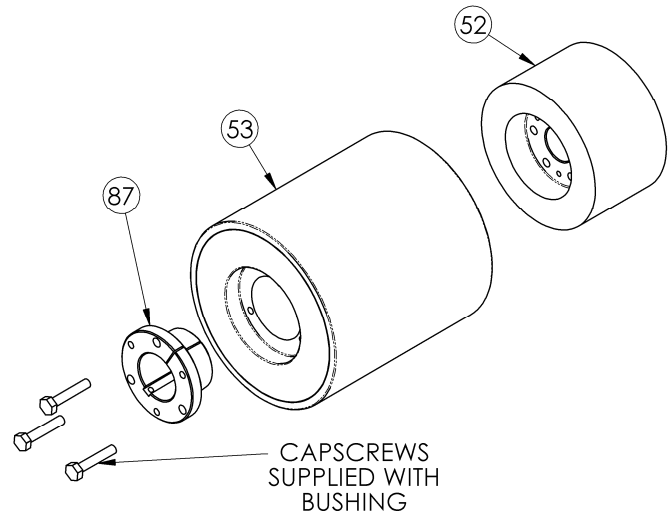
**RELIEF VALVE - OPTIONAL**

Ref. No.	Part Name	Parts Per Pump	Part No.
1	Cap - Relief Valve (R/V)	1	413151
2	Adjusting Screw - R/V	1	433101
4	Cover - R/V	1	414500
5	Capscrews - R/V Cover	4	920335
6	Body - R/V	1	404500
7	Spring Guide - R/V	1	424500
7A	O-Ring - Spring Guide (PTFE)	1	702110
8	Spring - R/V (35-75 psi)	1	471807
	Spring - R/V (76-125 psi)		471808
9	Valve - R/V	1	452201
10	O-Ring - R/V Cover (PTFE)	1	702080
22	Capscrews - R/V Body	6	920335
88	Gasket - R/V Cap	1	533101



**MAGNET OPTIONS**

Ref. No.	Part Name	Parts Per Pump	Part No.
52	Inner Magnet - MC130	1	684515
53	Outer Magnet - MC130	1	684525
	254TC-256TC Frame 284TC-286TC Frame		
87	Bushing Outer Magnet - MC130 254TC-256TC Frame	1	902460
	Bushing Outer Magnet - MC130 284TC-286TC Frame		
	Bushing Outer Magnet - MC130 MC280TC Motor Coupling Adaptor		902461



\* For motor frame sizes larger than 280TC, use Blackmer Motor Coupling Adapter MCA280TC and a foot mounted (Non "C" face) motor.

