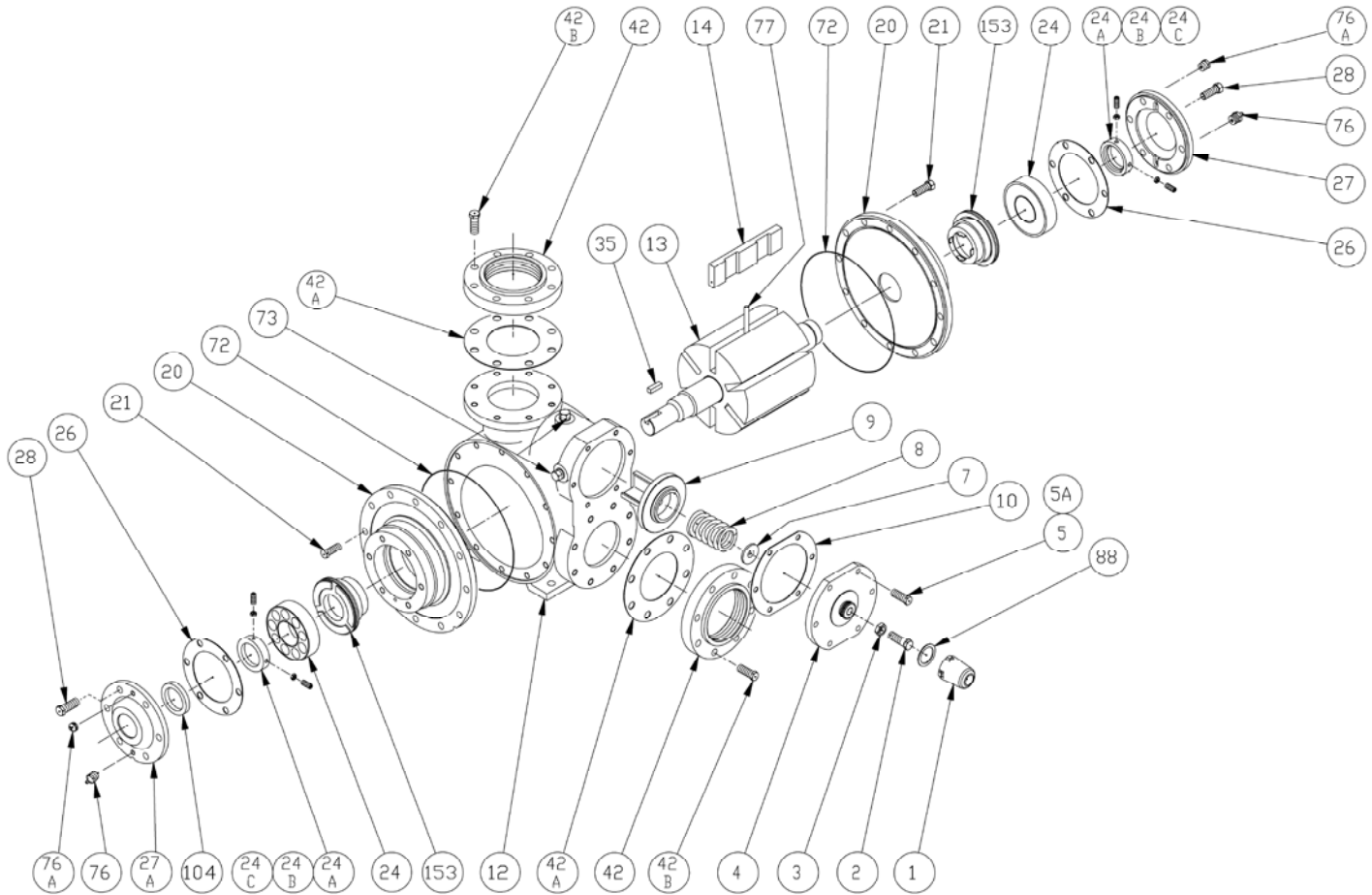


BLACKMER PARTS LIST

PUMP MODEL: X4B

Section 101
Effective Feb 2014
Replaces Jan 2011

Keep with Instructions 101-B00 for Installation, Operation and Maintenance



| Ref. No. | Description | Parts per Pump | Part No. | Ref. No. | Description | Parts per Pump | Part No. |
|----------|-----------------------------|----------------|---------------------|----------|---|----------------|------------------------|
| 1 | Cap - Relief Valve (R/V) | 1 | 413957 | 24 | Ball Bearing | 2 | ¹ 903182 |
| 2 | Adjusting Screw - R/V | 1 | 436307 | 24A | Lock Collar - Bearing (with Setscrew 24B) | 2 | ^{1,2} 721937 |
| 3 | Locknut - Adjusting Screw | 1 | 436355 | 24B | Setscrew | 4 | ^{1,2} 922104 |
| 4 | Cover - R/V | 1 | 411904 | 24C | Jam Nut | 4 | ^{1,2} 922923 |
| 5 | Capscrew - R/V Cover | 6 | 920351 | 26 | Gasket - Bearing Cover | 2 | ¹ 386950 |
| 7 | Spring Guide - R/V | 1 | 426355 | 27 | Bearing Cover - Outboard | 1 | 041905 |
| 8 | Spring - R/V (36-50 psi) | 1 | 476303 | 27A | Bearing Cover - Inboard | 1 | 041903 |
| | Spring - R/V (51-75 psi) | | 476310 | 28 | Capscrews - Bearing Cover | 12 | 920491 |
| | Spring - R/V (76-110 psi) | | 476305 | 35 | Key - Shaft, Square | 1 | ^{1,3} 909149 |
| | Spring - R/V (111-125 psi) | | | 42 | Flange - 4" NPT (Std.)* | 2 | 651900 |
| 9 | Valve - R/V (Std.) | 1 | 456315 | 42A | Gasket - NPT Flange (Std.) | 2 | ¹ 381904 |
| | Valve - R/V (Nickel Plated) | | 456300 | 42B | Capscrews - NPT Flange (Std.) | 16 | 920532 |
| 10 | Gasket - R/V Cover | 1 | ¹ 531903 | 72 | O-Ring - Head (FKM) (Std.) | 2 | ¹ 702024 |
| 12 | Cylinder | 1 | 021906 | | O-Ring - Head (PTFE) | | 702093 |
| | 13 | Rotor & Shaft | 1 | 261950 | | | O-Ring - Head (Buna-N) |
| | EC Rotor & Shaft | 261944 | | 73 | Gage Plug | 2 | 908198 |
| 14 | Vane - Duravane (Std.) | 6 | ¹ 091924 | 76 | Grease Fitting | 2 | 317815 |
| | Vane - EC Cast Iron | | 091952 | 76A | Grease Relief Fitting | 2 | 701992 |
| | Vane - EC Laminate | | 091931 | 77 | Push Rod | 3 | ¹ 121905 |
| 20 | Head | 2 | 031908 | 88 | Gasket - R/V Cap | 1 | ¹ 533908 |
| 21 | Capscrews - Head | 24 | 920510 | 104 | Grease Seal | 1 | ¹ 904190 |
| | | | | | Kit - Maintenance | | 898959 |

¹ Included in Maintenance Kit

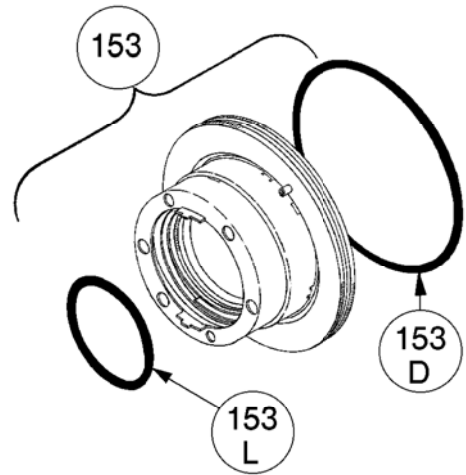
² Earlier models of the X4B are not fitted with Bearing Lock Collars. Lock Collars may be fitted to older models.

³ Pumps prior to April 2008 used Woodruff key 909135, included in Maintenance kits.

* See Page 2 for Weld / ANSI flange options. SS = Stainless Steel. EC = Extra-Clearance.

MECHANICAL SEALS

| Ref. No. | Part Name | Parts Per Pump | Part No. |
|----------|---|----------------|---------------------|
| 153 | Mechanical Seals Complete - Cast Iron Stationary Seat, Carbon Seal Face, FKM O-Rings. (IVCV) (Std.) | 2 | ¹ 336982 |
| | Cast Iron Stationary Seat, PTFE O-Ring, Carbon Seal Face w/ PTFE Seal Ring. (IACT) | | 331973 |
| | Stainless Steel Stationary Seat, PTFE O-Ring, Carbon Seal Face w/ PTFE Seal Ring. (WACT) | | 331901 |
| | Cast Iron Stationary Seat, Carbon Seal Face, Buna-N O-Rings. (INCN) | | 336958 |
| 153D | O-Ring - Stationary (FKM) | 2 | 711932 |
| | O-Ring - Stationary (PTFE) | | 702090 |
| | O-Ring - Stationary (Buna-N) | | 701945 |
| 153L | O-Ring - Rotating (FKM) | 2 | 701967 |
| | Seal Ring - Rotating (PTFE) | | ** |
| | O-Ring - Rotating (Buna-N) | | 701933 |



¹ Included in Maintenance Kit

**PTFE Rotating Seal Ring is not available as a separate part.

FLANGE OPTIONS

| Ref. No. | Part Name | Parts Per Pump | Part No. |
|----------|---------------------------------|----------------|----------|
| 42 | Flange - 4" Weld | 2 | 651906 |
| | Flange - 4" ANSI | | 651917 |
| 42B | Capscrews - Weld / ANSI Flange | 8 | 920532 |
| 42C | O-Ring - Weld/ANSI Flg. (FKM) | 2 | 702238 |
| | O-Ring - Weld/ANSI Flg. (PTFE) | | 702239 |
| | O-Ring - Weld/ANSI Flg (Buna-N) | | 702237 |

